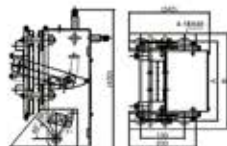
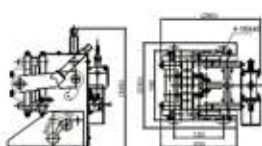




OX-250 夹绳器(机械制动式) Rope Brake(mechanical)

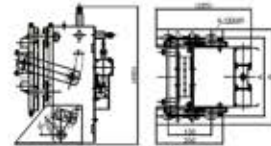
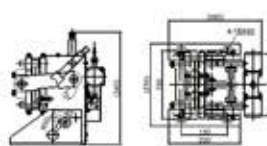


型号	A	B	额定绳直径 Rated rope diameter	绳径 Rope dia	适用吊钩吨位 Applicable hook load
DD1	235	285	φ16mm	φ5	≤250kg
DD2	275	320	φ19mm	φ6	≤250kg

额定速度 Rated speed	额定重量 Rated load weight	额定绳径 Rated rope dia	额定重量 Rated load
A) 1.1V42.5m/s	50-11V42.5m/s	φ1.1Q=430kg-1000kg	50-11V42.5m/s
B) 1.1V42.5m/s	50-11V42.5m/s	φ1.1Q=430kg-1000kg	50-11V42.5m/s
C) 1.1V42.5m/s	50-11V42.5m/s	φ1.1Q=430kg-1000kg	50-11V42.5m/s

额定速度 Rated speed	额定重量 Rated load weight	额定绳径 Rated rope dia	额定重量 Rated load
A) 1.1V42.5m/s	50-11V42.5m/s	φ1.1Q=430kg-1000kg	50-11V42.5m/s
B) 1.1V42.5m/s	50-11V42.5m/s	φ1.1Q=430kg-1000kg	50-11V42.5m/s
C) 1.1V42.5m/s	50-11V42.5m/s	φ1.1Q=430kg-1000kg	50-11V42.5m/s

OX-250 夹绳器(电磁制动式) Ox-250 Rope Brake(electromagnetic)



型号	A	B	额定绳直径 Rated rope diameter	绳径 Rope dia	适用吊钩吨位 Applicable hook load
DD1	235	285	φ16mm	φ5	≤250kg
DD2	275	320	φ19mm	φ6	≤250kg

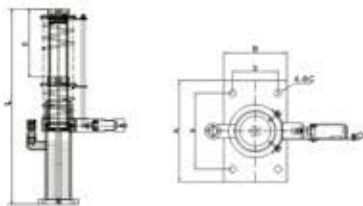
额定速度 Rated speed	额定重量 Rated load weight	额定绳径 Rated rope dia	额定重量 Rated load
A) 1.1V42.5m/s	50-11V42.5m/s	φ1.1Q=430kg-1000kg	50-11V42.5m/s
B) 1.1V42.5m/s	50-11V42.5m/s	φ1.1Q=430kg-1000kg	50-11V42.5m/s
C) 1.1V42.5m/s	50-11V42.5m/s	φ1.1Q=430kg-1000kg	50-11V42.5m/s

额定速度 Rated speed	额定重量 Rated load weight	额定绳径 Rated rope dia	额定重量 Rated load
A) 1.1V42.5m/s	50-11V42.5m/s	φ1.1Q=430kg-1000kg	50-11V42.5m/s
B) 1.1V42.5m/s	50-11V42.5m/s	φ1.1Q=430kg-1000kg	50-11V42.5m/s
C) 1.1V42.5m/s	50-11V42.5m/s	φ1.1Q=430kg-1000kg	50-11V42.5m/s

液压缓冲器(弹簧外置式) OH Buffer(spring outside)



OH-65 OH-70 OH-80 OH-210 OH-220 OH-275 OH-425

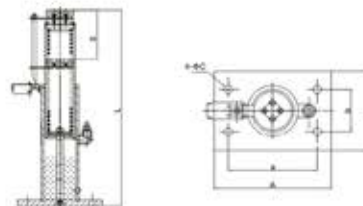


型号 Type	额定速度(m/s) Rated speed	最大总缓冲能量(kJ) Max total buffer energy	最小总缓冲能量(kJ) Min total buffer energy	柱高行程S (mm) Column stroke	总缓冲行程L (mm) Total buffer stroke	总缓冲行程L (mm) Total buffer stroke
OH-65	φ0.62	6000	1000	65	350	150 × 100 180 × 140
OH-75	φ1.0	2500	300	75	300	210 × 80 250 × 125 18
OH-85	φ1.0	3000	400	80	315	180 × 90 200 × 125 14
OH-210	φ1.75	3000	780	210	600	160 × 90 200 × 125 14
OH-220	φ1.75	2500	400	220	780	210 × 80 250 × 125 18
OH-275	φ3.0	3000	860	275	780	210 × 80 250 × 125 18
OH-425	φ2.5	9500	880	425	1120	150 × 100 190 × 140 14

液压缓冲器(弹簧内置式) OH Buffer(spring inside)



OH-10 OH-16 OH-20



型号 Type	额定速度(m/s) Rated speed	最大总缓冲能量(kJ) Max total buffer energy	最小总缓冲能量(kJ) Min total buffer energy	柱高行程S (mm) Column stroke	总缓冲行程L (mm) Total buffer stroke	总缓冲行程L (mm) Total buffer stroke
OH-10	φ1.0	2500	300	100	368	150 × 90 180 × 125 14
OH-16	φ1.6	5300	700	175	625	210 × 100 270 × 150 16
OH-20	φ2.0	5300	1300	280	815	210 × 100 270 × 150 16