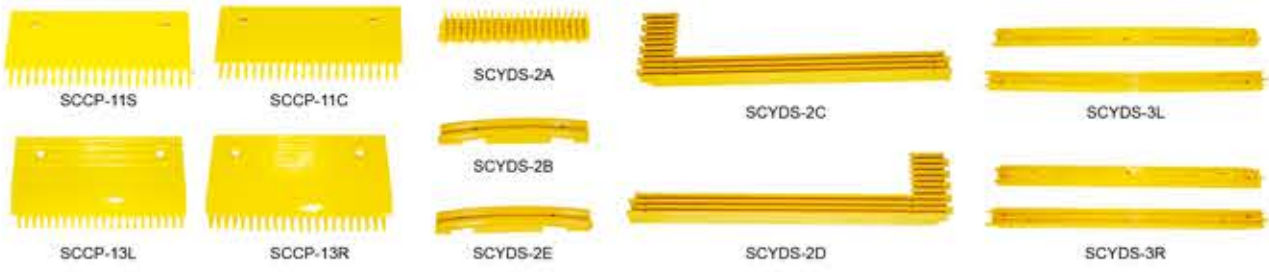




SEES#	SCHINDLER#	产品描述	DESCRIPTION
SCFP-1		摩擦轮 Friction Pulley	OD:58-30, 8 Mounting Hole
SCHR-5		迅达扶手带托轮 Schindler Handrail Support Roller	
SCHR-6		迅达扶手带托轮 Schindler Handrail Support Roller Assembly	
SCWH-2		骨架滚轮 Skeleton Roller	Φ70-25 6204 ID:20
SCWH-3		骨架滚轮 Skeleton Roller	Φ78.2-22 6204 ID:20
SCWH-4		骨架滚轮 Skeleton Roller	Φ78.2-22 ID:17
SCWH-5		尼龙铝芯扶手托轮	Φ70-50 6204DU ID:20 Nylon Aluminum Hub Handrail Roller
SCWH-6		铝芯滚轮 / 托轮 Aluminum Hub Support Roller	Φ70-50 6302 ID:15
SCWH-7		多楔带轮 Multi-Wedge Belt Sheave	Φ97-70 6204 双轴承 GD 86 ID:20
SCWH-8		多楔带轮 Multi-Wedge Belt Sheave	Φ89.5-70 6204 双轴承 GD:85.4 ID:20
SCWH-9		多楔带轮 Multi-Wedge Belt Sheave	Φ85-70 6204 双轴承 ID:20
SCWH-11	SSEF50110	红色聚氨酯轮 Roller	Φ70-25 6204 ID:20
SCWH-12		蓝色聚氨酯轮 Blue Step Roller	Φ76-25
SCWH-13	SSEF50110	黑色聚氨酯轮 Roller	Φ70-25 6204 ID:20
SCWH-14		中心轮 余牌通用 Central Wheel	ID:35
SCWH-19		导向轮 Guide Roller	
SCWH-20		骨架滚轮 Skeleton Roller	76-25 6204
SCWH-20A		静轮 Anti-Static Roller	85-30
SCWH-20B		静轮 Anti-Static Roller	98-30
SCWH-20C		静轮 Anti-Static Roller	105-30



SEES#	SCHINDLER#	产品描述	DESCRIPTION
SCCP-1C	SMR313609	迅达9300梳齿板 长度:199.4 高度:107 孔距:145 齿距:9.068 备注:铝22齿 中	Schindler 9300 Comb Plate Length:199.4 Height:107 Hole Spacing:145 Tooth Pitch:9.068 Remark:Aluminum Center
SCCP-1L	SMR57410420	迅达9300梳齿板, 带嵌条左 长度:203.5 高度:107 孔距:145 齿距:9.068 备注:铝22齿 左	Schindler 9300 Comb Plate Length:203.5 Height:107 Hole Spacing:145 Tooth Pitch:9.068 Remark:Aluminum 22 Teeth Left
SCCP-1R	SMR57410421	迅达9300梳齿板, 带嵌条右 长度:203.5 高度:107 孔距:145 齿距:9.068 备注:铝22齿 右	Schindler 9300 Comb Plate Length:203.5 Height:107 Hole Spacing:145 Tooth Pitch:9.068 Remark:Aluminum 22 Teeth Right
SCCP-1YC	SMR313283	迅达9300梳齿板 长度:199.4 高度:107 孔距:145 齿距:9.068 备注:黄22齿 中	Schindler 9300 Comb Plate Length:199.4 Height:107 Hole Spacing:145 Tooth Pitch:9.068 Remark:Yellow 22 T Center
SCCP-1YL	SMR57410420Y	迅达9300梳齿板, 带嵌条左 长度:203.5 高度:107 孔距:145 齿距:9.068 备注:黄22齿 左	Schindler 9300 Comb Plate Length:203.5 Height:107 Hole Spacing:145 Tooth Pitch:9.068 Remark:Yellow 22 T Left
SCCP-1YR	SMR57410421Y	迅达9300梳齿板, 带嵌条右 长度:203.5 高度:107 孔距:145 齿距:9.068 备注:黄22齿 右	Schindler 9300 Comb Plate Length:203.5 Height:107 Hole Spacing:145 Tooth Pitch:9.068 Remark:Yellow 22 T Right
SCCP-1BC	SMR313762	迅达9300梳齿板 长度:199.4 高度:107 孔距:145 齿距:9.068 备注:黑22齿 中	Schindler 9300 Comb Plate Length:199.4 Height:107 Hole Spacing:145 Tooth Pitch:9.068 Remark:Black 22 T Center
SCCP-1BL	SMR57410420H	迅达9300梳齿板, 带嵌条左 长度:203.5 高度:107 孔距:145 齿距:9.068 备注:黑22齿 左	Schindler 9300 Comb Plate Length:203.5 Height:107 Hole Spacing:145 Tooth Pitch:9.068 Remark:Black 22 T Left
SCCP-1BR	SMR57410421H	迅达9300梳齿板, 带嵌条右 长度:203.5 高度:107 孔距:145 齿距:9.068 备注:黑22齿 右	Schindler 9300 Comb Plate Length:203.5 Height:107 Hole Spacing:145 Tooth Pitch:9.068 Remark:Black 22 T Right
SCCP-6A1		梳齿板 左长度:205.5 高度:181.36 孔距:145 齿距:9.068 备注:铝22齿	Comb Plate Length:205.5, Hole Spacing:145, Tooth Pitch:9.068, Aluminum 22T
SCCP-6A2		梳齿板 中长度:199.4 高度:181.36 孔距:145 齿距:9.068 备注:铝22齿	Comb Plate Length:199.4, Hole Spacing:145, Tooth Pitch:9.068, Aluminum 22T
SCCP-6Y1		梳齿板 左长度:205.5 高度:181.36 孔距:145 齿距:9.068 备注:黄色22齿	Comb Plate Length:205.5, Hole Spacing:145, Tooth Pitch:9.068, Yellow 22T
SCCP-6Y2		梳齿板 中长度:199.4 高度:181.36 孔距:145 齿距:9.068 备注:黄色22齿	Comb Plate Length:199.4, Hole Spacing:145, Tooth Pitch:9.068, Yellow 22T
SCCP-6B1		梳齿板 左长度:205.5 高度:181.36 孔距:145 齿距:9.068 备注:黑色22齿	Comb Plate Length:205.5, Hole Spacing:145, Tooth Pitch:9.068, Black 22T
SCCP-6B2		梳齿板 中长度:199.4 高度:181.36 孔距:145 齿距:9.068 备注:黑色22齿	Comb Plate Length:199.4, Hole Spacing:145, Tooth Pitch:9.068, Black 22T
SCCP-3		梳齿板 长度:205 高度:153 孔距:145 齿距:9 备注:人行道铝22齿 中	Comb Plate Length:205 Height:153 Hole Spacing:145 Tooth Pitch:9 Remark:Sidewalk Aluminum 22 Teeth Center
SCCP-7	A305004N	梳齿板 长度:199 高度:153 孔距:145 齿距:9 备注:人行道铝22齿 边	Comb Plate Length:199 Height:153 Hole Spacing:145 Tooth Pitch:9 Remark:Sidewalk Aluminum 22 Teeth Side

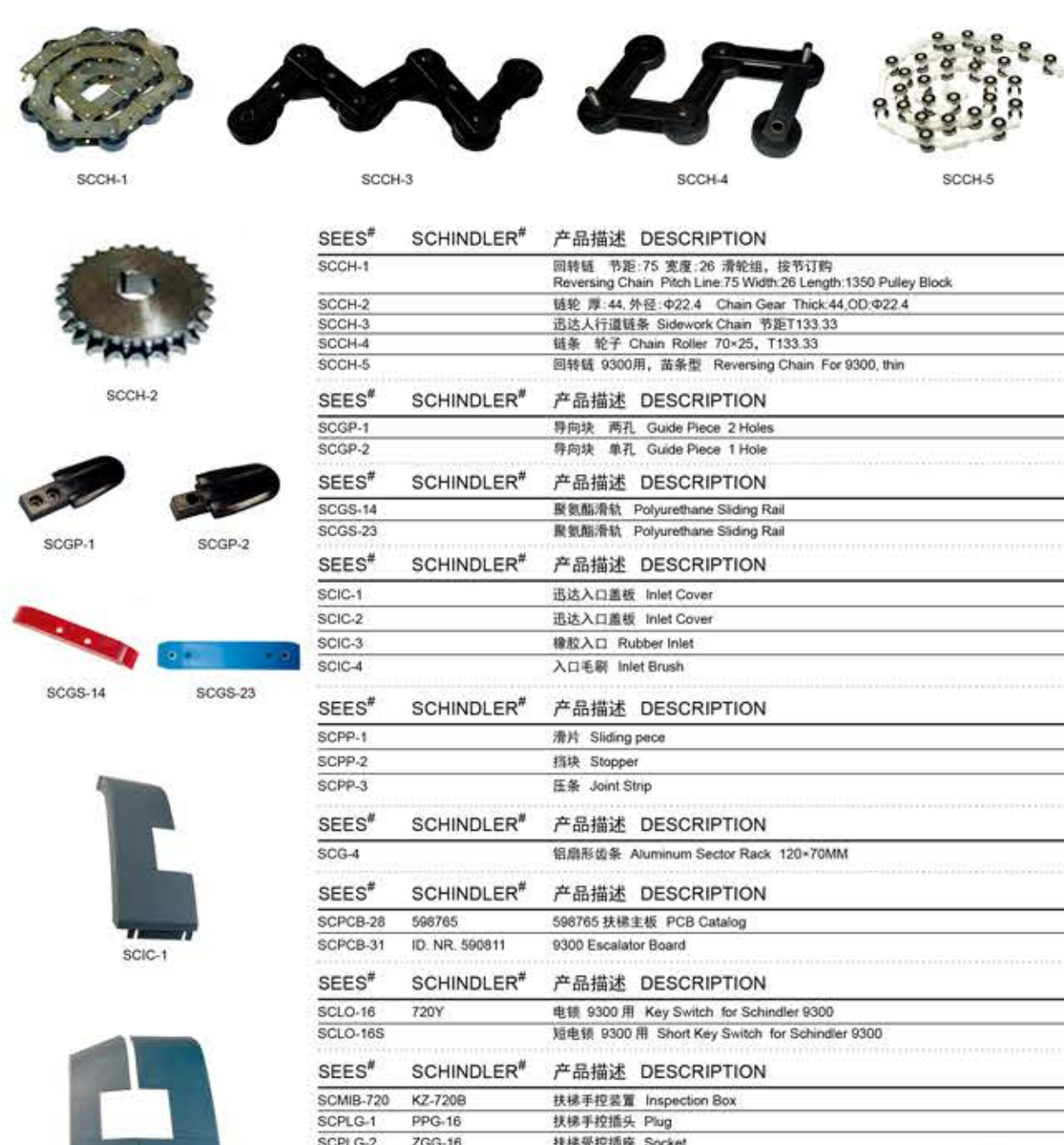


SEES#	SCHINDLER#	产品描述	DESCRIPTION
SCCP-11S		梳齿板 颜色:黄色 长度:199.4 高度:107.8 孔距:145 齿距:9.068 备注:塑料22齿 中	Comb Plate Color:Yellow Length:199.4 Height:107.8 Hole Spacing:145 Tooth Pitch:9.068 Remark:Plastic, Center
SCCP-11C		梳齿板 颜色:黄色 长度:205.2 高度:107.8 孔距:145 齿距:9.068 备注:塑料22齿 边	Comb Plate Color:Yellow Length:205.2 Height:107.8 Hole Spacing:145 Tooth Pitch:9.068 Remark:Plastic, Side
SCCP-13L	BEVG	奔一梳齿板 LEFT Comb Plate Left	
SCCP-13R	BEVG	奔一梳齿板 LEFT Comb Plate Left	
SCYDS-1A		黄色边条 长度:319 齿距:8.4 宽度:42	Demarcation Strip Length:319 Tooth Pitch:8.4 Width:42
SCYDS-1B		黄色边条 长度:319 齿距:8.4 宽度:42	Demarcation Strip Length:319 Tooth Pitch:8.4 Width:42
SCYDS-1C		黄色边条 长度:268 齿距:26 厚度:24.4	Demarcation Strip Length:268 Tooth Pitch:26 Thick Width:24.4
SCYDS-2A	SCS319900	迅达黄色边条 长度:202.5 齿距:9.068 宽度:49.6 (前定界)	Schindler Demarcation Strip Length:202.5 Tooth Pitch:9.068 Width:49.6(Front)
SCYDS-2B	SCS319905	迅达黄色边条 长度:222 厚度:28 宽度:28.5(左侧弧度定界)	Schindler Demarcation Strip Length:222 Thick:28 Width:28.5(Right Radian)
SCYDS-2C	SCS319901	迅达黄色边条 长度:403 厚度:25 宽度:109 (左定界)	Schindler Demarcation Strip Length:403 Thick:25 Width:109(Left)
SCYDS-2D	SCS319902	迅达黄色边条 长度:403 厚度:25 宽度:96 (右定界)	Schindler Demarcation Strip Length:403 Tooth Pitch:25 Thick Width:96(Right)
SCYDS-2E	SCS319903	迅达黄色边条 长度:222 厚度:28 宽度:28.5 (左侧弧度定界)	Schindler Demarcation Strip Length:222 Thick:28 Width:28.5(Left Radian)
SCYDS-3L	BEVG	奔一黄色边条 左 Demarcation Strip Left	
SCYDS-3R	BEVG	奔一黄色边条 右 Demarcation Strip Right	

SEES#	SCHINDLER#	产品描述	DESCRIPTION
SCST-1A		铝合金人行道 Moving walk Pallet	1128*140mm
SCST-1B		铝合金人行道 Moving walk Pallet	1138*140mm
SCST-1C		铝合金人行道 Moving walk Pallet	928*140mm
SCST-1D		铝合金人行道 Moving walk Pallet	938*140mm
SCST-2		扶梯梯级 Aluminum Step	9300
SCST-3		铝合金带边铝 Aluminum Step with Demarcation	
SCST-6		扶梯梯级 9300 梯级, 喷漆黑色 Aluminum Step Black	
SCST-7		扶梯梯级 Aluminum Step	
SCST-8		人行道搭扣 Pallet Bukle	

SEES#	SCHINDLER#	产品描述	DESCRIPTION
SCBE-1		橡胶多楔带 (无齿) Multi-Wedge Rubber Belt	
SCBE-2		橡胶多楔带 黑色 1841 Multi-Wedge Rubber Belt Black L=1841MM	
SCBE-3		橡胶多楔带 Multi-Wedge Rubber Belt	

SEES#	SCHINDLER#	产品描述	DESCRIPTION
SCBRA-1		刹车装置 右 Brake Right	
SCBRA-2	897200	扶梯制动器 Brake (single action solenoid)	DF-SAS.SAC110/120V 50/60Hz
SCBRA-3	ID. NR. 296732	抱闸线圈 Brake Coil 80V (11E 13E 14E 16E)	
SCBRA-4		刹车带 Brake Band	



SEES#	SCHINDLER#	产品描述	DESCRIPTION
SCCH-1		回转链 节距:75 宽度:26 清轮组, 按节订购	Reversing Chain Pitch:75 Width:26 Length:1350 Pulley Block
SCCH-2		链轮 厚:44, 外径:Φ22.4 Chain Gear Thick:44, OD:Φ22.4	
SCCH-3		迅达人行道链条 Sidewalk Chain 节距T133.33	
SCCH-4		链条 轮子 Chain Roller 70-25, T133.33	
SCCH-5		回转链 9300用, 苗条型 Reversing Chain For 9300, thin	

SEES#	SCHINDLER#	产品描述	DESCRIPTION
SCGP-1		导向块 两孔 Guide Piece 2 Holes	
SCGP-2		导向块 单孔 Guide Piece 1 Hole	

SEES#	SCHINDLER#	产品描述	DESCRIPTION
SCGS-13		聚氨酯滑轨 Polyurethane Sliding Rail	
SCGS-23		聚氨酯滑轨 Polyurethane Sliding Rail	

SEES#	SCHINDLER#	产品描述	DESCRIPTION
SCIC-1		迅达入口盖板 Inlet Cover	
SCIC-2		迅达入口盖板 Inlet Cover	
SCIC-3		橡胶入口 Rubber Inlet	
SCIC-4		入口毛刷 Inlet Brush	

SEES#	SCHINDLER#	产品描述	DESCRIPTION
SCPP-1		滑片 Sliding pece	
SCPP-2		挡块 Stopper	
SCPP-3		压条 Joint Strip	

SEES#	SCHINDLER#	产品描述	DESCRIPTION
SCG-4		铝扇形齿条 Aluminum Sector Rack	120-70MM

SEES#	SCHINDLER#	产品描述	DESCRIPTION
SCPCB-28	598765	598765 扶梯主板 PCB Catalog	
SCPCB-31	ID. NR. 590811	9300 Escalator Board	

SEES#	SCHINDLER#	产品描述	DESCRIPTION
SCLO-16	720Y	电锁 9300 用 Key Switch for Schindler 9300	
SCLO-16S		短电锁 9300 用 Short Key Switch for Schindler 9300	

SEES#	SCHINDLER#	产品描述	DESCRIPTION
SCMIB-720	KZ-720B	扶梯手控装置 Inspection Box	
SCPLG-1	PPG-16	扶梯手控插头 Plug	
SCPLG-2	ZGG-16	扶梯受控插座 Socket	

